

**HEATH VILLAGE**

# VOICE

*Vol. 54 No. 4*

*Winter 2022*

## *Inside*

- 2 Discover Your Inner Artist
- 3 The Christmas Creche
- 4 A New Era at the Newark Museum
- 5 Preserving Local History & Culture
- 6 Art in Nature ~ Grounds For Sculpture, Newcomers
- 7 Resident Anniversary & Christmas Tea In Memoriam



# Discover Your Inner Artist

The Women's Association plans four programs each year. With each program we strive to provide an opportunity to experience something new and enjoy a social event as a community. All residents are welcome and encouraged to attend.

It was a privilege to coordinate our most recent program, *Discover Your Inner Artist*, where we invited our talented and artistic neighbor, Maria Moch to lead us in an art class for all interested residents from first-time painters to advanced artists. Maria took us on an artistic journey into the medium of painting with watercolors. She is an excellent teacher. She assembled all the necessary supplies as well as created an instructive step by step video shown on the overhead projector in the Auditorium. Each participant was guided in elements of mixing colors, perspective, and balance to create a beautiful wintry scene. In addition to the video, several other members of the Women's Association, all gifted artists themselves, assisted Maria in providing hands-on instruction.

*"As a relatively new resident and one with almost no painting/drawing experience, I was delighted with this wonderful program! We had an instructional video; the tables were set up with all the needed materials and our many resident artists walked around offering suggestion. I could sense everyone's delight and excitement as they completed a painting and shared them with others. It was a fun and instructive afternoon. Many thanks to all who contributed to the creation of this program,"* said Maria Katonak. I think every attendee would agree with Maria.

All residents are encouraged to stop by the monthly art exhibitions in the Activities Room where the work of not only Maria Moch but that of our many talented resident artists can be viewed.

Article by: Beverley Kinney

Photos by: Housing & Marketing Services



Heath Village Voice  
Heath Village  
Hackettstown, NJ  
908-852-4801

Editorial Staff:  
Melissa Nichols  
Kara Olsen



# The Christmas Creche

I instantly fell in love with our beautiful nativity scene that is placed on campus every holiday season. I learned from employees that this creche has a deep-rooted history here and has been part of the display for more than 40 years! According to staff, it has been a Heath Village tradition for *"forever and a year."*

When looking at the nativity, I kept thinking to myself *"new project"* and couldn't wait to give it some TLC and a fresh coat of paint. I waited a couple of years before asking our Maintenance and Grounds Department if I could repaint the complete set. They had the idea of sending the nativity to a school to have it repainted, but I felt brave enough to claim the project for myself.

I had experience repainting my friend's grandmother's set when I lived in New Orleans where I had my own ceramic workshop in my home. I worked on my own nativity there as well. They turned out fabulous and everyone was thrilled to bits. I eventually went global with my love for repairing & repainting nativities and worked on a set when I lived in Singapore. I knew I was seasoned enough to take excellent care of the Heath Village nativity and give it new life.

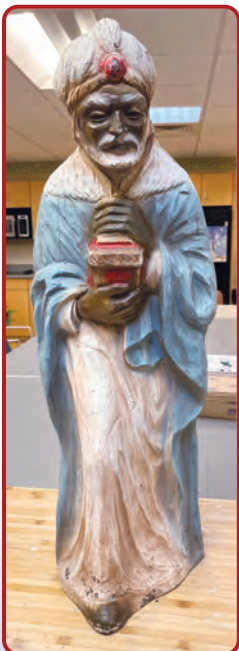
The project turned into a nine-month journey and was such a meaningful experience for me. It was fun to have fellow residents pop in to see what I was doing and watch the process. I was thankful for all their color advice and input along the way. I was also excited to add my own flair to some of the pieces, such as painting a traditional Irish cross on the donkeys back and a shamrock on a wise men's coat. I loved updating the wise men with jewels and rich colors too.

I am proud and honored to have been able to complete this job for our community. It was a true pleasure.

*"Nollaig Shona Duit" ~ "Happy Christmas to you."*

Article by: Carmel Bourneuf

Photos by: Housing & Marketing Services



Before



After



Before



After



# A New Era at the Newark Museum



What a fun day it was this past fall when a bus filled with approximately 20 residents hopped on the Heath Village bus to take a trip to the Newark Museum. As someone who has visited this museum quite often over the years, let me begin by saying that this is not the Newark Museum of ten years ago. It's a whole new, magical place.

Our day began by enjoying our box lunches at a group of tables and chairs set up for us. Then we went on our way to explore the museum. Some of us proceeded to an African exhibit room. The first item that caught my eye was a mirrored box set into a wall - it looked at first like a kaleidoscope with moving images in repetitive patterns. It was titled "Anima Mundi" by Theo Eshater, and described as "a multi-media and

shadow installation." The docent urged me to put my head into the box. Looked like a dangerous thing to do for a person who usually gets motion sickness. But no, it was fun! My head appeared in the moving images and there I was, grinning like a clown. Others were urged to follow and were equally enchanted.

Then Bev Kinney and I went to the North Wing, which has exhibits of classic art. We enjoyed the still life artwork, the landscape, the Frederick Remington cowboy riding down the mountain - scenes I recalled from former visits to the Newark Museum.

We were all struck by the interpretive panels alongside each work of art. The descriptions focused on and reflected today's current worldviews. All the works were described in both English and Spanish, which is also a new feature in the museum.

We then went to another moving exhibit titled "Field Notes from the Empathic Universe." This showed images of fish and other sea creatures swimming in a circle on the floor. I had the distinct impression that if I went too close, I would sink into the water and go down an unending tunnel. It was intriguing.

On our way out, we were taken aback by a mosaic of small marble pieces by Hildreth Meiere, a Prudential Plaza Mosaic: "Pillars of Hercules." It weighs over two tons and is made of about 36,500 marble tiles.

This trip was a WOW experience from beginning to end. It is certainly not the same Newark Museum I attended for fifty years! It's an exciting destination for all ages. We hope to have a repeat visit soon.

*Article by: Nancy Wolff*

*Photos by: Genevieve Bucher, Activities Assistant / Store Manager*





# Preserving Local History & Culture

Dr. Alan Cooper, familiarly known to our community as Alan and Vice President of our Residents' Council, was recently honored by Somerset County's Cultural and Heritage Commission with the Special Recognition Award for his work and dedication to the Lord Stirling Archaeological Project. He accepted his award at the County's Historic Preservation and History Awards Ceremony this past October.



Dr. Cooper led the public archaeology program for the county Park Commission for more than 25 years. The project included uncovering structural and artifact material representing the 250+ year habitation on this site, including that of the residence of William Alexander, the Earl of Stirling, who during the Revolution played a prominent figure on the staff of George Washington.

The ceremony was highlighted by the keynote address, given by Dr. Richard Veit, Professor of Archaeology and Associate Dean of the School of Humanities and Social Sciences at Monmouth University. The talk focused on the work of Dr. Cooper at the Lord Stirling historical site in Basking Ridge, NJ, and his efforts to bring greater attention to this hero of the Revolution.

Dr. Cooper is steadfast in his mission to preserve local history, culture, and traditions and this carries through in his daily life at Heath Village. On behalf of everyone at Heath Village, we congratulate Alan on this prestigious award as well as thank him for his contributions to our community.

*Article by Kara Olsen, Marketing Coordinator ~ Housing & Marketing Services*

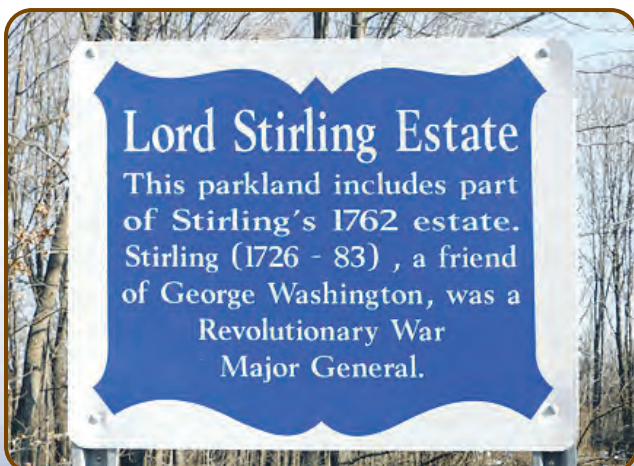
*Photos provided by Dr. Cooper*



*Dr. Cooper speaking at the County's Historic Preservation and History Awards Ceremony*



*Dr. Cooper holding a Late Archaic spear point made by grinding rather than chipping. It was found on Lord Stirling's estate and represents the native cultures who lived there perhaps as long as 12,000 years ago. It further testifies to the incredible history of our area and thus our responsibility to preserve all we can of the successive periods of life in it.*





# Art in Nature ~ Grounds For Sculpture

As described in their brochure, "Grounds for Sculpture, located in Hamilton Township, NJ, is a museum, sculpture garden, and arboretum where art and nature are always at play." A bus full of Heath Village residents went there in September on a gorgeous fall day and we enjoyed wandering around the 45-acre garden, visiting the indoor museum, and goggling at the amazing sculptures.

Seward Johnson - sculptor, philanthropist, and Founder of Grounds for Sculpture - envisioned creating a public sculpture garden and museum where contemporary sculpture is made accessible to everyone and offers an environment where people from all backgrounds have the opportunity to become comfortable with various forms of art. Mr. Johnson passed away in 2020 and the grounds are dotted with many of his sculptures as well as dozens of works by other artists. He specialized in sculpting life size portraits of ordinary people doing ordinary things as well as re-creating famous scenes like Manet's "Le Dejeuner sur l'Herbe." I loved the group he sculpted of impressionist painter Monet, together with Johnson himself and Winston Churchill, all focused on painting a boating scene. An indoor exhibition celebrates Johnson's family background and artistic life.

I urge anyone with a day to spare (and good weather) to visit this enchanting place. Many of us are looking forward to a repeat visit.

Article by: Octavia Brown

Photos by: Genevieve Bucher, Activities Assistant / Store Manager



## Newcomers





# Resident Anniversary & Christmas Tea Celebrating 115 Years of Living at Heath Village

Happy Heath Village Anniversary to our residents celebrating a milestone anniversary of 10 years or longer. At our annual Christmas Tea, Heath Village recognized 10 residents who have lived at the community for 10 or more years. Together, these residents represent an unbelievable 115 years of living at the Village. Please help us wish them a Happy Anniversary and cheers to many more wonderful years together!

Article & Photos by Housing & Marketing Staff



**PHOTO (from L to R):** Vanda Pozzi (15 years); Evelyn Maline (15 years); Jim Muller (10 years)  
**Missing from photo:** Maud Bishop (15 years); Elizabeth Herkenham (10 years); Margaret Jenkins (10 years); Richard Ligertwood (10 years); Thalia Twaddell (10 years); and Franklin & Joyce Vilas (10 years).



## In Memoriam

Jean Dean	11/21/22
Richard "Dick" Walters	12/13/22
Elizabeth Herkenham	12/20/22

Heath Village  
430 Schooley's Mountain Road  
Hackettstown, NJ 07840

NON-PROFIT ORG.  
U.S. POSTAGE  
**PAID**  
UNION, NJ  
PERMIT NO. 363

Join us for a Virtual Open House on January 26th at 11:00 a.m. Call 908-684-5009 today to register. Participants will enjoy a "tour" of our beautiful campus, "see" an apartment, and learn more about our many amenities.

## The Friendship Fund Charitable Gift Annuity

**Making an annuity gift:** You irrevocably transfer money or securities to our Friendship Fund. In exchange, we pay you (and another, or a survivor, if you like) a fixed amount annually for life. In effect, your transfer is doing two things -making a charitable gift and purchasing a fixed income for life.

**Income tax benefit:** You get an income tax charitable deduction in the year you make your gift. If you let us know your date of birth and the amount of your contemplated gift, we can calculate your deduction.

**How annual payments are taxed:** A large portion of each annuity payment received is tax-free. The tax-free amount is fixed at the outset and remains constant for the period of your life expectancy.\*\*

The rate of return is attractive and guaranteed for life - without investment worries or responsibility.

Rate Examples:  
One-Life Annuity Rates  
1/1/2023

Age**	Rate
75	6.6 %
76	6.8 %
77	7.0 %
78	7.2 %
79	7.4 %
80	7.6 %
81	7.8 %
82	8.1 %
83	8.3 %
84	8.5 %
85	8.7 %
86	8.9 %
87	9.1 %
88	9.3 %
89	9.5 %
90+	9.7 %

The Friendship Fund Charitable Gift Annuity is a wonderful opportunity for giving, as it benefits the donor as well as residents of Heath Village. We hope that you will discuss this opportunity with your legal or financial counsel.

## Enjoy campus life at HEATH VILLAGE A UNIQUE RETIREMENT COMMUNITY

**Independent living** in one of the garden-type units ranging in size from studio apartments to two-bedroom cottages. Dining and meal plans are optional.

Hotel-style living in **Heath House** where meals, housekeeping and linen services are included.

**Mayflower House** is a residential health care facility with 24 hour staff, meals, housekeeping, laundry, medication monitoring all included in the monthly cost.

**The Meadows Nursing & Rehabilitation** offers long-term care, sub-acute, rehabilitation and respite care services in a new state-of-the-art facility.

All monthly rates include 24-hour emergency call service and annual carpet cleaning; use of lounges, chapel, library, swimming pool, computer equipment, craft rooms, fitness center and other community facilities; bus service to Hackettstown, club cart service within the Community and on-site parking.

*Affordable monthly rates.  
Optional community fees.  
Come and see for yourself.  
Call 908-852-4801 for an appointment.*